

Crazy Iron

CRAZY IRON Roundbar YAMAHA MT-07, FZ-07
ID: 3400119

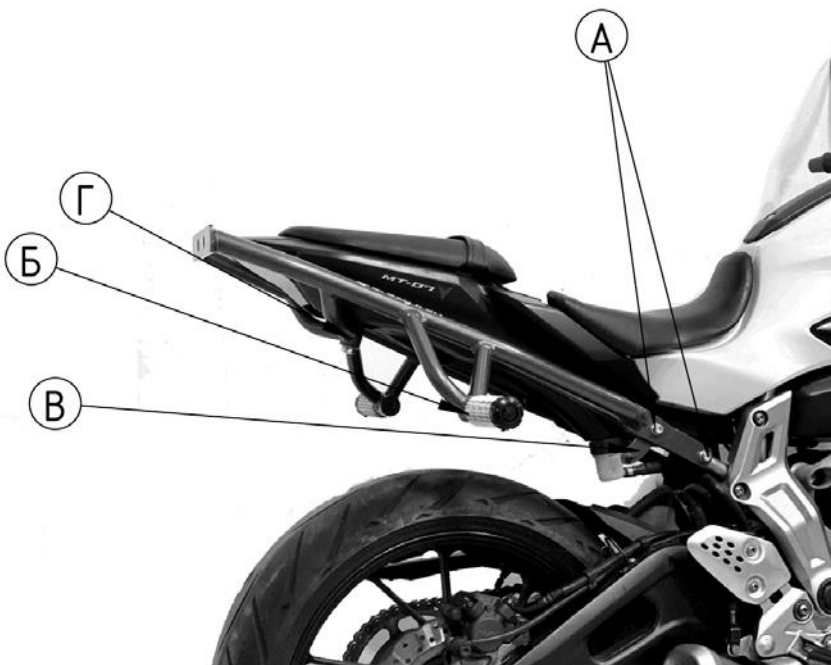
CRAZY IRON Roundbar YAMAHA MT-07, FZ-07 is installed instead the rear factory footrests

Material:

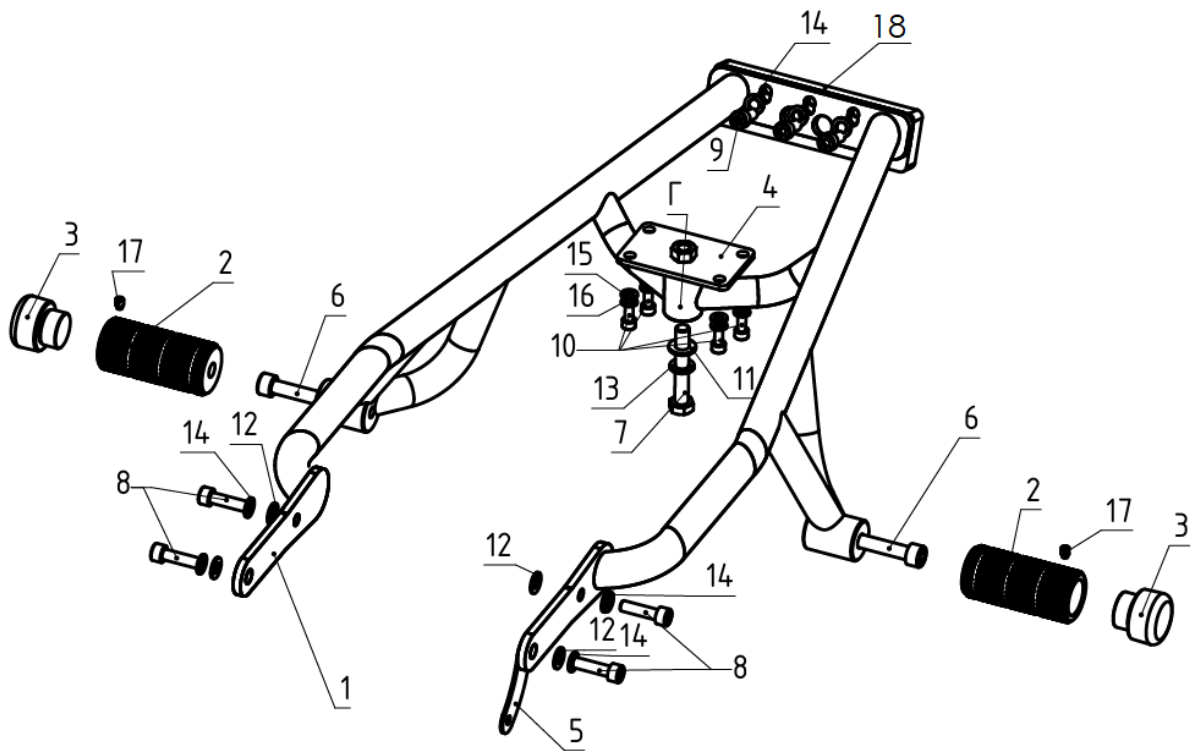
- main: steel pipe, marks 20.
- pegs and rear slider: high strength aluminium
- side sliders: polyamide



pic.1 Installed roundbar,
Left side view



pic.2 Installed roundbar,
Right side view



scheme 1

№	Items	Description	q-ty	Comments
1	Subcage MT-07 art.3400119		1	
2	Peg		2	
3	Slider (puck)	Slider	2	
4	ФГЛ.150.01.167 СБ	Mounting plate	1	
5	ФГЛ.150.01.168	Plate for mounting brake fluid tank	1	
6	Screw M10 x 60 DIN 912		2	
7	Bolt M10 x 65 DIN 933		1	
8	Screw M8 x 30 DIN 912		4	
9	Screw M8 x 20 DIN 912		3	
10	Screw M6 x 16 DIN 912		4	
11	Washer 10.5 DIN 125		1	
12	Washer 8.4 DIN 125		7	
13	Spring washer 10 DIN 127		1	
14	Spring washer 8 DIN 127		7	
15	Washer 6.4 DIN 125		4	
16	Spring washer 6 DIN 127		4	
17	Screw M6 x 8 DIN 915		2	
18	Rear aluminium slider		1	

Installation

Contact a specialized service, do not install the cage yourself!

1. Remove the original passenger footrests. To do this, unscrew the screws mounting the right bracket of the passenger footrest M8. Same for on the right side, unscrew the original brake fluid tank mount. Similarly unscrew the similar screws mounting the left passenger footrest bracket and remove it.
2. Remove attachments equipment and fairing elements covering the original points attaching the original rear part (License plate and blinkers).
3. Attach the fixing plate item 4 of diagram 1 to the fixing points of the original tail with number and turn signals (see item 3 and fig. 2, point D), using the fixing plate fasteners. original tail with number and turn signals (see item 3 and fig. 2, point D) using fasteners item 9 of pattern 1 (M8x16 DIN 912 screw) as well as washers and washers at items 15 and 16 of *scheme 1*.
4. Place the subcage against the original passenger footpeg mounting points (points A and D in Figures 1 and 2) and align the holes in the subcage mount and the original passenger footpeg mounting points with the original tail mounting points. of the original passenger footpegs and the original tail attachment points. Make sure the holes are aligned and that the subcage installation is not interfered with by the geometry of the plastic, and the subframe, exhaust system or suspension components of the motorcycle.
5. Using the fixing screws, item 8 of scheme 1 (Screw M8x30 DIN 912), as well as washers and cotter pins. positions 12 and 14 of scheme 1 and fixing ear position 5, pre-fix the rindbar 2 screws on the right and 2 screws on the left at points "A" (see Fig. 1 and 2).
*see recommended screw tightening torques in table 1.
6. The ear of the tank mount is fixed on the right side between the mounting ear of the rundbar and the motorcycle. A spacer washer is used for the second point A on the right side position 11 of diagram 1.
7. Using the fasteners, position 6,11,13 of diagram 1, pre-fix the rundbar, at mounting point fixing point "G" of scheme 1 (also in Figures 1 and 2).
*see recommended screw tightening torques in Table 1.
Using the fixing screw item 7 of the scheme 1, fix the footrests, item 2 of the scheme 1 in the mounting points B (Fig. 1 and Fig. 2).
8. Using fasteners 9, 12 and 14 of pattern 1, attach the aluminum slider, position 16 of pattern 1, to the end of the rundbar.
9. Tighten the fasteners according to the table.
10. Install the slider, item 3 of diagram 1, into the footrests and secure with the set screw, item 14 of diagram 1. with the set screw, item 14 of diagram 1

Tightening torques Nm		
Thread	Connection type	
	Steel	Aluminum
M6	10	6
M8	24	20
M10	48	35
M12	56	45